

# Amphibians and Reptiles of Komodo National Park

## Amfibi dan Reptil Taman Nasional Komodo



AARANYA  
WILDLIFE  
ODYSSEYS

Declared in 1980, the Komodo National Park is located within the Lesser Sunda Islands of Indonesia. The park is 1,817 km<sup>2</sup> in size of which 603 km<sup>2</sup> is land, and the rest marine habitats. This includes three larger islands (Komodo, Padar and Rinca) and 26 smaller islands. Over 3,500 people inhabit the islands within the park. Due to its unique value, mainly as the home range of the iconic Komodo Dragon, the park was declared a World Heritage Site and a Man and Biosphere Reserve by UNESCO in 1986. The park is also within the 'Coral Triangle', a region with some of the richest marine biodiversity on Earth.

This poster includes all species of amphibians and reptiles recorded from Komodo National Park as of January 2019. We have removed previous doubtful records of an Indo-Pacific Gecko (*Hemidactylus garnotii*) and a Reticulated Python (*Malayopython reticulatus*) from the list of reptiles known to inhabit the park. Species are not shown to scale.



Javanese Bullfrog  
*Kaloula baleata*  
Kintel Lekat, Belentuk



Banded Bullfrog  
*Kaloula pulchra*  
Belentung Kembang



Crab-eating Frog  
*Fejervarya cancrivora*  
Katak Sawah, Katak Hijau



Komodo Cross Frog  
*Oreophryne jeffersoniana*  
Kodok Jam Pasir Komodo



Female



Male

Asian Spined Toad  
*Duttaphrynus melanostictus*  
Kodok Buduk, Kodok Puru

### WARNING

Recently, the toxic Asian Spined Toad has invaded several Indonesian islands close to the Komodo National Park. Toads create toxic substances in their skin, and studies show that Komodo Dragons may suffer death if they feed on these toxic amphibians.

If you see any toads within the park, please immediately report it to the park rangers.



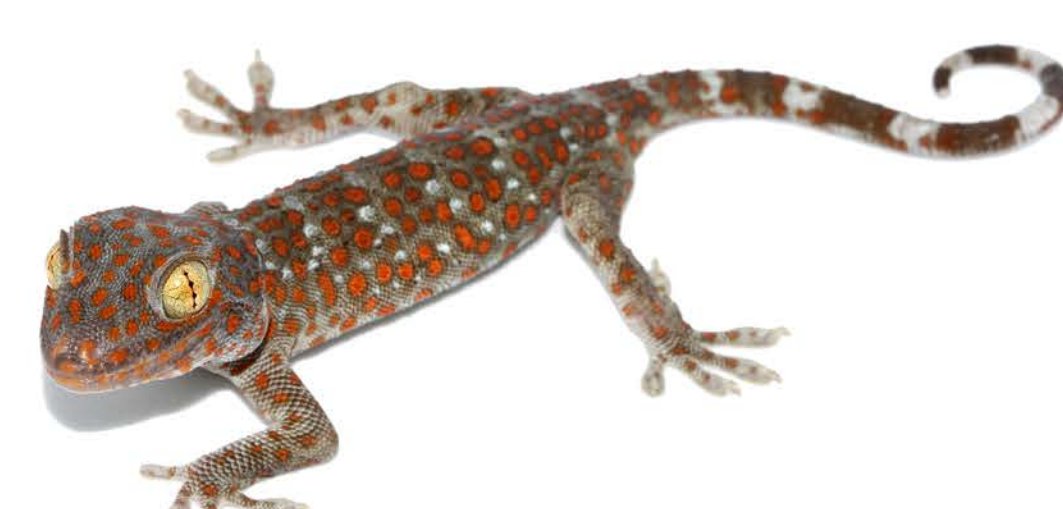
D'armandville's Bent-toed Gecko  
*Cyrtodactylus darmandvillei*  
Cicak Batu D'Armandville



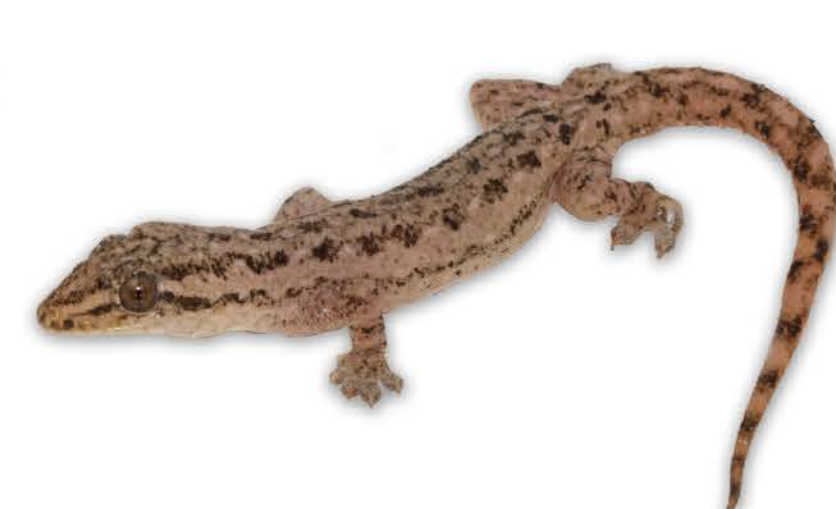
Laevigatus Bent-toed Gecko  
*Cyrtodactylus laevigatus*  
Cicak Batu Laevigatus



Four-clawed Gecko  
*Gehyra mutilata*  
Cecak Gula



Tokay Gecko  
*Gekko gecko*  
Tokek



Common House Gecko  
*Hemidactylus frenatus*  
Cecak Rumah, Cecak Kayu



Flat-tailed Gecko  
*Hemidactylus platyurus*  
Cecak Berekor Pipih, Cecak Rumah



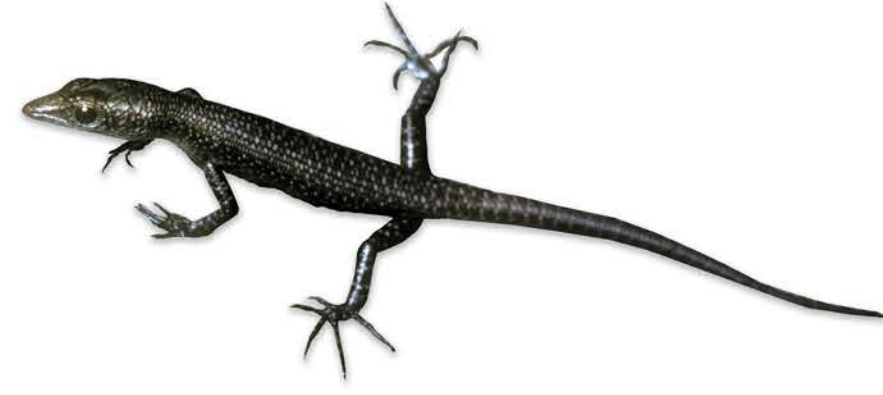
Common Dwarf Gecko  
*Hemiphyllodactylus typus*  
Tokek Cebol



Mourning Gecko  
*Lepidodactylus lugubris*  
Tokek Duka



Boschma's Gliding Lizard  
*Draco boschmai*  
Haphap, Cekiber



Burden's Snake-eyed Skink  
*Cryptoblepharus burdeni*  
Kadal Mata Ular Burden



Nusa Tenggara Timur Snake-eyed Skink  
*Cryptoblepharus renschi*  
Kadal Berekor Biru



Dunn's Emo Skink  
*Emoia similis*  
Kadal Pantai Dunn



Flores Bar-lipped Skink  
*Eremiascincus emigrans*  
Kadal Flores



Common Sun Skink  
*Eutropis multifasciata*  
Kadal Kebun, Kadal Matahari



Lesser Sunda Dark-throated Skink  
*Sphenomorphus melanopogon*  
Kadal Sunda Leher Hitam



Flores Banded Skink  
*Sphenomorphus striolatus*  
Kadal Belang Flores



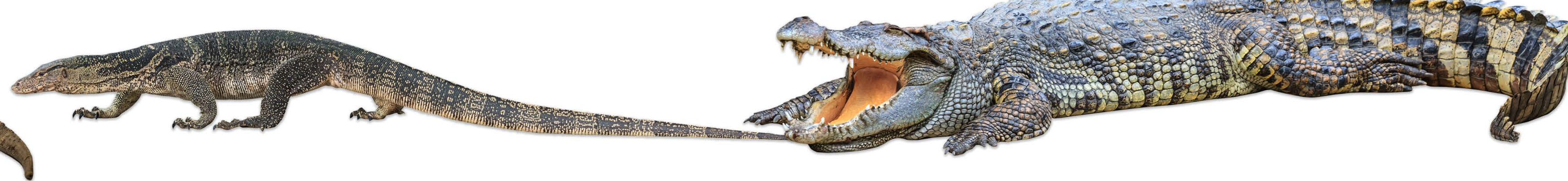
Schlegel's Forest Skink  
*Sphenomorphus schlegelii*  
Kadal Hutan Schlegel



New Guinea Blind Lizard  
*Dibamus novaeguineae*  
Kadal Buta Nugini



Komodo Dragon  
*Varanus komodoensis*  
Ora



Asian Water Monitor  
*Varanus salvator*  
Biawak



Saltwater Crocodile  
*Crocodylus porosus*  
Buaya



Green Turtle  
*Chelonia mydas*  
Penyu Hijau



Hawksbill Turtle  
*Eretmochelys imbricata*  
Penyu Sisik



True Sea Snakes



Sea Kraits



Southern Indonesian Spitting Cobra  
*Naja sputatrix*  
Ular Sendok, Ular Kobra Penyembur



Little File Snake  
*Acrochardus granulatus*  
Ular Air Tawar, Ular Karung



Dog-faced Water Snake  
*Cerberus schneiderii*  
Ular Tambak



Lesser Sunda Cat Snake  
*Boiga hoeseli*  
Ular Kucing Sunda



Sunda Rat Snake  
*Coelognathus subradiatus*  
Ular Tikus Sunda



Lesser Sunda Bronzeback  
*Dendrelaphis inornatus*  
Ular Tali



Common Wolf Snake  
*Lycodon capucinus*  
Ular Cecak, Ular Rumah



Timor Python  
*Malayopython timoriensis*  
Sanca Timor



Lesser Sunda White-lipped Pitviper  
*Trimeresurus insularis*  
Ular Mati Ekor, Ular Majapahit



Siamese Russell's Viper  
*Daboia siamensis*  
Bandotan Puspa, Misa



Mock Viper  
*Psammodynastes pulverulentus*  
Ular Percha, Ular Beludak Palsu



Island Pipe Snake  
*Cylindrophis opisthorhodus*  
Ular Kepala Dua



Brahminy Blind Snake  
*Indotyphlops braminus*  
Ular Kawat



Schmutz's Blind Snake  
*Indotyphlops schmutzi*  
Ular Buta Schmutz

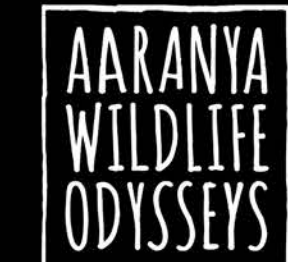


Lesser Sunda Blind Snake  
*Sundatyphlops polygrammicus*  
Ular Buta Sunda Kecil

Project partners



Published by



Scientific Wildlife Expeditions Specialists  
www.aaranya.com.au

Prepared by

Ruchira Somaweera & Robert Gandola

Research by

Thumith Nangalla, Eridani Mulder, Marselinus Helmanto, Melissa Bruton, Hardianus Sina, Joanne Heathcote, Robert Gandola, Tim Jessop, Catriona Hendry, Nton Mpoa, Benyamin Panus, Aji Azis, Elang Resa, Dirgo Saverinus, Sven Mecke, Glenn Shea & Ruchira Somaweera  
Lindley MacKay (Komodo Cross Frog, Schlegel's Forest Skink & Schmutz's Blind Snake), Mark O'Shae (Burden's Snake-eyed Skink & Flores Bar-lipped Skink), Jim McGuire (Laevigatus Bent-toed Gecko), Graeme Gillespie (New Guinea Blind Lizard), Elang Resa (Sunda Rat Snake), Feri Razali (Island Pipe Snake), Jasmine Vink (Spitting Cobra) & Dreamstime.com (Komodo Dragon, Asian Water Monitor & Saltwater Crocodile). All other images by Ruchira Somaweera.

Images by